

Development Integration  
Workshop  
15 September 2010



## Klipriviersberg Conservancy

Protecting, Promoting and Enhancing  
Our Natural Assets for  
Sustainable Urban Living



### Purpose of the Meeting

Explore the dynamic and complex relationships of development and conservation, or rather integrated sustainability, to be able to guide development into the Klipriviersberg Conservancy area



### Outline of the Meeting

- **Presentation**
  - Background
  - Introduction to Klipriviersberg Conservancy
  - Legislation and policies
  - Development vs Conservation or Sustainability
- **Discussion – ideas and suggestions**
- **Acknowledgements & Appreciation**
- **Closing Observation**



### What makes our area unique & special?

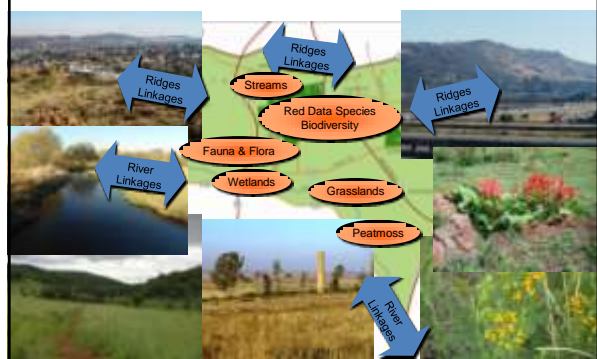
- Beautiful & unique Klipriviersberg ridges
- Klipriviersberg Nature Reserve
- Klipriver & wetlands
- Fauna & flora
- Grasslands & open spaces
- Valuable biodiversity & “Red Data” species
- Archaeological & cultural history
- Density of tourism, recreation & sporting activities
- Centrality & accessibility
- Environmental, economic & social value



### Klipriviersberg Conservancy - Core Area



### Ecological & Environmental Features



## Tourism, Sporting & Recreation Activities



© 2010

Development Integration Meeting  
15 September 2010 7

## Why establish Klipriviersberg Conservancy?



© 2010

Development Integration Meeting  
15 September 2010 8

- Protect Klipriviersberg Nature Reserve
- Promote protect & enhance natural biodiversity & environmental value
- Promote sustainable urban living
- Co-operative integrated management to protect environment yet realise social & economic development
- Need agreed development approach & philosophy
- Guide tourism, recreational, cultural, educational development
- Promote conservation through collaboration

## History and Progress



© 2010

Development Integration Meeting  
15 September 2010 9

- Established interest and support - Scoping Public Meeting - 18 June 2008
- Launched Interim Constitution and Executive Committee - 19 November 2008
- Meetings, presentations & workshops:
  - General public
  - Business & residential
  - Church, education and community groups
  - Provincial & local authorities
- Establishing understanding about the Conservancy
- Understanding community needs & concerns
- Developing priorities for actions and activities
- Inaugural AGM & Constitution - 13 April 2010

## Constitution Aims & Objectives



© 2010

Development Integration Meeting  
15 September 2010 10

- Conservation through Collaboration**
- Aims & Objectives:**
- Protect, promote and enhance the biodiversity of the area and to retain its natural beauty
  - Encourage landowners, residents and all other stakeholders in the area to be environmentally aware and to embrace the practice and principles of sustainability and sustainable urban living
  - Assist and cooperate with local, provincial and national government regarding biodiversity, sustainability, management of natural resources, sustainable social and economic development and job creation within the area

## Constitution Aims & Objectives



© 2010

Development Integration Meeting  
15 September 2010 11

- Raise awareness in the community of the environmental, social and economic opportunities of the area based on the value of its natural environmental resources
- Guide and encourage suitable and appropriate social and economic development that supports sustainability, attracts tourism and furthers job creation
- Establish a mutually beneficial relationship between property development and conservation
- Assist in preserving heritage, archaeological and historical sites within the area
- Liaise and cooperate with a wider network of similar conservation areas and organisations for mutual growth and development

## Management Framework Strategic priorities and activities



© 2010

Development Integration Meeting  
15 September 2010 12

- |   |   |
|---|---|
| <p><b>Catalyse Projects</b></p> <ul style="list-style-type: none"> <li>Promote sustainable urban living for residential &amp; industrial</li> <li>Involve schools</li> <li>Support cleanup campaigns</li> <li>Encourage greening</li> <li>Support Bylaws</li> <li>Implement carbon credits programme</li> </ul> <p><b>Share Information</b></p> <ul style="list-style-type: none"> <li>Build distribution channels</li> <li>Establish website</li> <li>Erect billboards &amp; signs</li> <li>Give presentations</li> <li>Establish brand</li> <li>Distribute Newsletters</li> <li>Schedule specialist talks</li> <li>Use media</li> </ul> | <p><b>Grow Membership</b></p> <ul style="list-style-type: none"> <li>Run events programme</li> <li>Establish relationships with similar organisations</li> <li>Build business loyalty programmes</li> <li>Establish International twinning partners</li> <li>Develop interest groups</li> </ul> <p><b>Coordinate, Protect &amp; Rehabilitate Biodiversity</b></p> <ul style="list-style-type: none"> <li>Initiate Biodiversity Stewardship Program</li> <li>Prepare landowner programmes</li> <li>Develop Environmental Management Framework</li> </ul> <p><b>Focus Areas:</b> rivers &amp; streams, wetlands, hills &amp; kopjes, historical sites, grasslands, agricultural areas</p> |
|---|---|

## Management Framework Strategic priorities and activities

### Integrate Urban Development

- Manage and guide development
- Build authority relationships
- Engage developers
- Address illegal uses
- Influence future roads
- Inform policy
- Support Bylaws

### Establish Enviro Centre

- Build collection of historical anecdotes
- Establish Library

### Secure Resources

- Finance & sponsorships
- Resources
- Events
- Carbon credits
- Recycling

### Establish Brand

- Website, signs, stationery

### Integrate Business development

- Promote economic growth

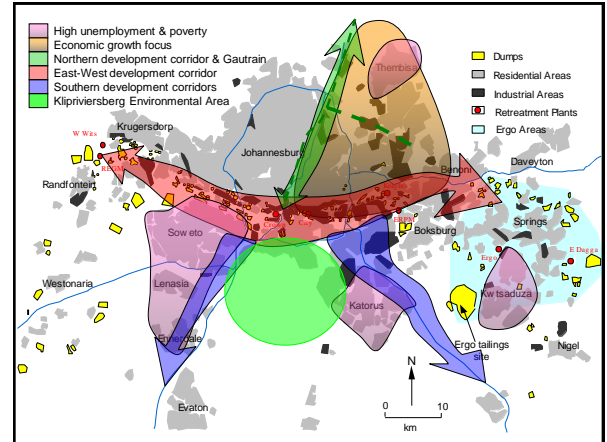
### Support special stakeholders

- Land owners adjacent to KNR
- Major landowners



© 2010

Development Integration Meeting  
15 September 2010 13



## Gauteng Grasslands Project

- 12 biodiversity priority grassland sites identified in Gauteng
- 2 sites within proposed Conservancy area include:
  - Klip River (approx size: 2174ha)
  - Klipriviersberg Nature Reserve (approx size: 644 ha)
- Vision: "The biodiversity and associated eco-system services of the grassland biome are sustained and secured for the benefit of current and future generations to strengthen the economy, to contribute to social development and to become a cornerstone of South Africa's development path"



© 2010

Development Integration Meeting  
15 September 2010 15

## GDARD "C Plan"

- GDARD C Plan identified areas
  - Important & Irreplaceable – large areas of the south
  - Reserved – Klipriviersberg Nature Reserve

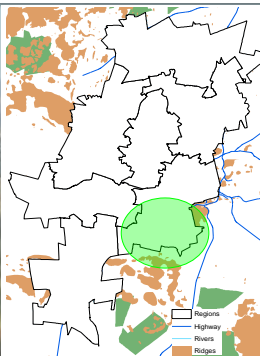


© 2010

Development Integration Meeting  
15 September 2010 16

## Joburg Metro SDF Analysis

- Joburg Metropolitan Open Space System
- Extensive potential open space areas identified with ridges, rivers & vleis
- Including
  - Klipriviersberg & Nature Reserve
  - Klip River
- Wetland Audit (June 2008)



© 2010

Development Integration Meeting  
15 September 2010 17

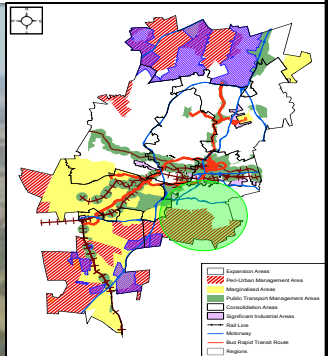
## Joburg Metro Growth Management

### Growth Management priority

- Peri Urban Management Area
- Outside Urban Development Boundary
- Restricted and controlled development

### BUT

- Development trends – northern areas are full
- Gekko Conservancy area in north under pressure
- Where to next .... ?



© 2010

Development Integration Meeting  
15 September 2010 18

## Joburg Metro Spatial & Environmental Management

### Spatial Development Framework

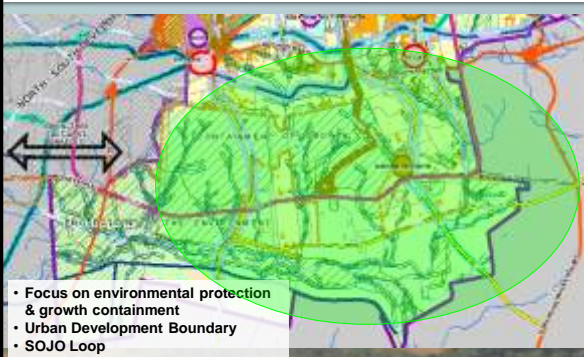
- East-West & North-South Development Corridors
- Urban Development Boundary
- KNR identified focus
- Contribute to social and economic growth
- Provide employment opportunities
- Contribute to social facilities and amenities



## SOJO Business, Tourism & Recreation Loop



## Joburg RSDf Region F



- Focus on environmental protection & growth containment
- Urban Development Boundary
- SOJO Loop

## Draft Klipriviersberg Urban Development Framework

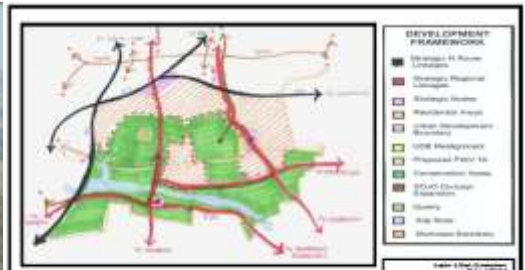


Figure 26. Klipriviersberg Conceptual Development Framework

- Reinforcement of environmental protection & growth containment
- Promotes linkages to surrounding areas

## Midvaal IDP: 2009/2010

- Recognition of conservancies (7)**
- Green belts & linking corridors
  - Development & environment integration
  - Proactive mitigation measures
- Importance of grasslands, Klip River & wetlands**
- Water quality
  - Ecological & biodiversity role
  - Economic & social opportunities
  - Agricultural areas potential
  - Nature based Eco- & Avi-Tourism promotion
  - Sports & recreation development - adventure activities, rowing facility?



## Midvaal IDP: 2009/2010

- Focus area – possible precinct plan
- Proposed mixed use development
- EMF recognition – protected areas & open space systems
- Development corridors & nodes – R82 & R59



## Ekurhuleni EMF: 2009/2010

### Ekurhuleni Environmental Management Framework

- Pristine hill slopes in Reading interchange
- Meyer's Farm area & ridges
- Reading golf course
- Gateway entrance to area
- High priority area



© 2010

Development Integration Meeting  
15 September 2010

25

## South African Constitution

### 24. Environment

Everyone has the right

1. to an environment that is not harmful to their health or well-being; and
2. to have the environment protected, for the benefit of present and future generations, through reasonable legislative and other measures that
  1. prevent pollution and ecological degradation;
  2. promote conservation; and
  3. secure ecologically sustainable development and use of natural resources while promoting justifiable economic and social development.



© 2010

Development Integration Meeting  
15 September 2010

26

## National Association of Conservancies/Stewardship in South Africa (NACSSA)

### Vision

*The promoter of stewardship that values biodiversity and sustainable living*

### Mission

*To provide the context for communities to realise sustainable value from ecological, social and economic assets*

### Objective

*Establish the framework for conservancies to address local biodiversity, social and economic sustainability and needs identified through stakeholder engagement*



© 2010

Development Integration Meeting  
15 September 2010

27

## Sustainability?

### Brundtland Report Definition (1987)

- Sustainable development addresses the needs of people, especially those of the poor
- There are limitations placed on sustainable development by the state of technology and social organisation
- Contemporary generations must ensure the equitable distribution of the Earth's resources both now and in the future
- Sustainability is pro-development provided it involves a progressive transformation of economy and society
- Sustainable development must account for its use of ecological capital



### Legs:

- Biodiversity
- Social
- Economic

### Platform:

- Governance
- Technology



© 2010

Development Integration Meeting  
15 September 2010

28

## Development Role Players, Perceptions & Realities

### Conservationists

- Individuals
- Conservancies
- Associations

### Developers

### Professionals

### Decision-makers

### Authorities

- Politicians
- Officials

### Users

- Residents
- Industrialists
- Communities

### Attitudes

- Development will happen!
- Over my dead body!
- See you in Bloemfontein!
- Greed

### Hardening of positions

### Different agendas

### Bribes, corruption and handouts

### Developer pressures on professional teams

- Professional integrity and ethics
- Objectivity of professional teams
- Professional short cuts - Cut & Paste!

### Sexy sirens: "Miss Trust" & "Miss Understanding"

- Who is telling the truth?
- Legal battles - Where has all the money gone?



© 2010

Development Integration Meeting  
15 September 2010

29

## Status: A Contextual Quagmire

Continuum of variations: Urban - Mixed - Rural  
Sectoral complexity & isolation

- Sectoral priority and focus - within and between
- Authority spheres – National, Provincial, Municipal
- Business
- Communities
- Agencies
- Legislative plethora
  - Laws, regulations, policies, by-laws
  - Environmental and Developmental
- New planning legislation on the horizon



© 2010

Development Integration Meeting  
15 September 2010

30

## Conservancy Role: Catalytic

Conservancies should become catalysts to promote sustainability in development and living

Organisation – National, Provincial & Local

Resistance vs resource

- Ground truthing – provide local knowledge
- Value opportunity - get something back

Don't waste money feeding lawyers

Understand and promote broader contribution with a wider context

Establish collaborate partnership – Win-Win-Win  
Integration of Environment & Development through all stages of strategy to implementation



© 2010

Development Integration Meeting  
15 September 2010

31

## Opportunities for Engagement

Constructive cooperation: a viable strategy for impact-building, trust-based relationships?

Balance non-negotiable between social development, economic growth, democratic consolidation and environmental protection

Where:

- Investigations
- Policy formulation – National, Provincial & Local
- Planning & Development conceptualisation, processes & alternatives
- Environmental processes & alternatives
- Decision informing and making
- Implementation and construction
- Monitoring and audits
- Enforcement



© 2010

Development Integration Meeting  
15 September 2010

32

## Discussion and workshop

### Examples

- Monahan Farm: <http://www.monaghanfarm.co.za>
- Estates with a Green Tinge - Xanadu Ecopark
  - Peglerae Operational Plan
  - Conservancy Conservation Management Plan

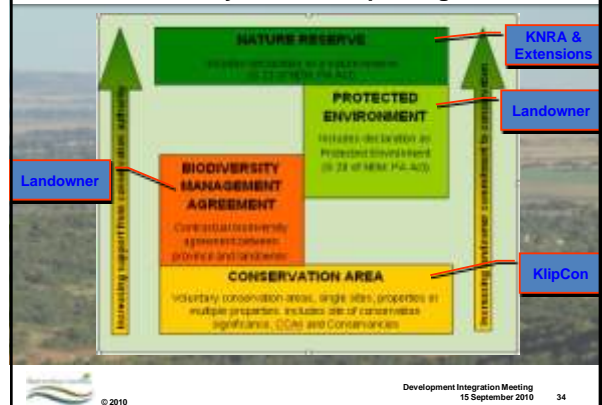


© 2010

Development Integration Meeting  
15 September 2010

33

## Biodiversity Stewardship Categories



© 2010

Development Integration Meeting  
15 September 2010

34

## Acknowledgements & Appreciation

- Committee members: For their assistance
- Thaba ya Batswana: For hosting the meeting
- Participants: for attending and contributing your concerns, ideas and suggestions



© 2010

Development Integration Meeting  
15 September 2010

36

## How do we see Klipriviersberg Conservancy?

- Green heart of Gauteng for living, working and playing
- Guardians of a Green Lifestyle by establishing a
  - Place for living and visiting
  - Place to sustain – Environment, Economic, Social
  - Place to protect – Biodiversity, Ridges, Rivers, Wetlands
  - Place to live – Lifestyle, Accessible business places & play areas
  - Place to visit – Tourism, Recreation, Cultural
  - Place of uniqueness – Area, Urban & Rural, Green city opportunity



© 2010

Development Integration Meeting  
15 September 2010

37



**THIS**  
Promotes value  
Protects areas  
Balances growth  
Supports services  
Manages development  
Enhances open spaces

**Conservation through Collaboration**



© 2010

Development Integration Meeting  
15 September 2010 38

### Contacts and References

**Contacts:**

Web site: [www.klipcon.org.za](http://www.klipcon.org.za)

Chairman: Andrew Barker - Cell 083 274 4424 or  
e-mail [chairman@klipcon.org.za](mailto:chairman@klipcon.org.za)

Vice Chairman: Clem Kourie - Cell 082 458 2816 or  
e-mail [vicechairman@klipcon.org.za](mailto:vicechairman@klipcon.org.za)

Secretary/Treasurer: Sue Edwards – Phone 011 680 7367  
e-mail: [secretary@klipcon.org.za](mailto:secretary@klipcon.org.za)

**References:**

Klipriviersberg Nature Reserve Association – [www.knra.co.za](http://www.knra.co.za)  
Conservancy Association - [www.conservancies.org](http://www.conservancies.org)  
City of Joburg – [www.joburg.org.za](http://www.joburg.org.za)  
GDARD – [www.grasslands.org.za](http://www.grasslands.org.za)  
Philip Tarboton – base plan & photographs  
Andrew Barker - photographs



© 2010

Development Integration Meeting  
15 September 2010 39